

LAMA LAMA

yintjingga

NEWS



MARAMBA • YINTJINGGA • YAAKARRU • TUULWA • RINDOPARR

Edition 4 | December 2014



The Values That Guide Us

We respect the land and all of our sacred places. We value our families, our people and our communities. We contribute ideas to each other. We respect our elders. We are proud of our culture and our traditions and we welcome others with pride and with confidence to experience and to respect it.

Lama Lama Vision

Our vision is to be standing on country together as one Lama Lama Community. We are strong families. Proud of who we are. Confident in who we are. Proud of one another.



WIND STORY is a reminder for Lama Lama people to stand proud on country, to come together to respect and care for our land, sea, families and community ... and to share the importance of our culture and traditional ways.



CONTACT

Coen

J.S. Love Building
COEN QLD 4892
Tel 07 4060 1048
Fax 07 4060 1065

Ranger Base

Lot 13 Port Stewart Rd
Port Stewart via COEN QLD 4892
Tel/Fax 07 4060 3369

Silver Plains Station

Tel /Fax 07 4060 3367

Cairns Office

Suite 5, Commercial Court
61 McLeod St
CAIRNS QLD 4870
Tel: 07 4084 0695
Fax: 07 4041 4846

This newsletter has been produced with the support of the Queensland and Australian Governments.

Design/Production
Narelle Jones Design

Editorial
Cheryl Prestipino
Mikayla Down

Welcome

Welcome to the fourth edition of the Yintjingga News.

This edition highlights some of our great work from the end of 2013 and throughout 2014.

Yintjingga News is for Lama Lama people to stay informed and celebrate our achievements. For those we work with, it offers you a way to find out more about who we are and what we do.

The next newsletter will be out in March 2015. If you would like to contribute, contact Mikayla Down, Engagement Officer at our Port Stewart Ranger Base or email engagement@lamalama.org.au



Contents

- 2 Lama Lama Land Trust
- 3 Message from Karen Liddy
- 4 Yintjingga Aboriginal Corporation
- 5 Message from Gavin Bassani
- 7 Lama Lama Elders
- 8 Lama Lama Rangers
- 14 Young Lama Lama Leaders
- 16 Junior Rangers
- 18 Training
- 19 Culture
- 20 Sea Country
- 21 Governance



Lama Lama Land Trust

Standing on Country Together

The Lama Lama Land Trust owns land and resources in trust on behalf of the Lama Lama people. The Land Trust's key role is to make decisions about how country is managed and what projects and activities are co-ordinated for the benefit of land, sea and people.

The Lama Lama Land Trust held its AGM in December 2013. It was election time and a new board was voted in. We welcome the new Board and congratulate them on stepping forward into leadership positions.

We'd also like to congratulate the previous board on their achievements. Much has been achieved during their leadership and they should feel proud of their contribution.

Highlights of the last term include - the move towards Self-Management and Autonomy – the Lama Lama Land Trust, with Yintjingga Aboriginal Corporation, now fully manage all aspects of the Ranger Program, including funding from both State and Federal Governments.

Lama Lama have attracted widespread support within the region and our efforts in looking after country are noted.

Significant improvements to infrastructure have also been achieved with increased operational facilities at Port Stewart Ranger Base and Marina

Plains Homestead and upgrades to the Multi-Purpose Community Building at Port Stewart.

THE NEW BOARD ARE:

Chair: Karen Liddy

Deputy: Gavin Bassani

Treasurer: Elaine Liddy

Secretary: Seppi Bassani

Committee Member: Paddy Bassani

Committee Member: Maureen Liddy

Committee Member: Keith Liddy

Committee Member: Fredrick Liddy

Public Officer: Alison Liddy



Ralph Barlow and Andrew Cedric in front of Luba Swamp.

2014 has seen the Lama Lama Land Trust focus on four key projects

- 1 Completing the boundary fence at Marina Plains will enable us to offer 'agistment' and help bring in a small income to the Rindoparr property.
- 2 Safari Camp grounds, Port Stewart. The development application was submitted to Cook Shire and we continue to work with ARUP in answering follow-up questions and notifications.
- 3 Continued negotiations regarding suitable public camping and access at Running Creek.
- 4 Exploring Sustainable Timber Harvesting on suitable areas of Running Creek.



Message from Karen Liddy Chairperson of Lama Lama Land Trust

I am happy to have taken on the role of Chairperson of the Lama Lama Land Trust.

I have been involved in the Trust for many years and look forward to my new role and working with other board members in continuing to move things forward for the Lama Lama Community.

To kick start 2014, I participated in the Indigenous Ranger Conference in Cairns – having the opportunity to hear stories from many other groups and communities in Queensland – as far south as Bundaberg. It was great to see the passion of Indigenous people in looking after country. It is the same passion that has led our organisations and people to where we are today and I look forward to the years ahead.





Yintjingga Aboriginal Corporation

The Yintjingga Aboriginal Corporation (YAC) was formed in 2009 by Lama Lama traditional owners living in Coen and Port Stewart. YAC is a homeland based, not-for-profit organisation and our objectives include improving the social, cultural, environmental and economic well-being of our Lama Lama community.

New Board

In December 2013, YAC held its Annual General Meeting. It was election time and we welcomed a new YAC Executive.

We congratulate the previous board on their great achievements – which were many. One of the highlights was setting up YAC to fully manage the Lama Lama Ranger program and activities. This has been an enormous challenge and we are doing well. There is always room for improvements – but the teamwork, the commitment and the dedication of the board members and all the staff of YAC needs to be acknowledged.

We welcome the new board and new members Maureen Liddy, Roland Cedric, Adelaide Salt, Annaleise Bard and Walter Peter. It is great to have a young person in Walter step up to represent his family and move into a leadership role. And we welcome our new members from our southern families and Marina Plains – Rindoparr.

Our Elders Group

Our Elders Group play an important role in governance and decision making – supporting directors and ensuring we are following a good path with our projects and activities.

Elder - Paddy Bassani.



THE YAC EXECUTIVE COMMITTEE

Chair: Gavin Bassani

Deputy Chair: Karen Liddy

Director: Seppie Bassani

Director: Maureen Liddy

Director: Walter Steven Peter

Director: Roland Cedric

Director: Annaleise Baird

Director: Adelaide Salt

Public Officer: Alison Liddy

THE ELDERS GROUP

Paddy Bassani

Keith Liddy

Ella Lawrence

Jimmy Peter

Maurice Cedric

Eunice Graham

Adelaide Salt

Fredrick Liddy



Message from Gavin Bassani Chairperson of Yintjingga Aboriginal Corporation

We have come to the end of 2014 when this Newsletter goes to print. The year has been very hectic, with the ranger program co-ordinating a range of activities across Land and Sea Country.

We now have a new board in place and I encourage and welcome every board member to help lead YAC into the coming years.

As we move into 2015, there will be challenges with maintaining funding and building new partnerships. Our Biodiversity Program is due to end in June 2015. It will be a challenge for our organisation to build on our successes and create new opportunities for growth and employment.

There will be challenges for all of our staff, in stepping up and doing the best they can at their job, and working together creating a strong Lama Lama team. As we get busier, we need everybody to commit to learning new skills and contributing. We need to continue to show that we have the capacity to manage the Ranger Program, this means, work completed on time and to a high standard.

A key challenge for Lama Lama people is to maintain the infrastructure we have on country. We started a contribution fund a number of years ago to help pay for maintenance, however, not all families are contributing. Everybody enjoys staying on country, and looking after our infrastructure is not only the responsibility of current YAC employees. Please talk to Traceylee and Alison in the Coen office about how you can contribute to this fund.

Introducing the YAC Community Development Fund. Toward the end of 2014, the board agreed to offer a Community Development Fund in 2015 to the Lama Lama community. \$5000 per year will be set aside and each support offered will be capped at \$500 per project. An application process will soon be established. Projects that aim to support Lama Lama people participating in sporting, educational, leadership, community and cultural activities will be considered.

Thanks everyone for a great year and look forward to working with you all in 2015.



A highlight of 2014 was the opening of the Cairns Office. We invited many of our partners to join the YAC and LLLT Executives for morning tea. The day was enjoyed by approximately 30 people, who congratulated us on our work.

Left to right: Seppi Bassani, Elaine Liddy, Gavin Bassani, Steven Walter Peter, David Crea, Department of Premiers and Cabinet, Cheryl Prestipino and Karen Liddy.



Shirts for SALE

LAMA LAMA FRIENDS AND FAMILY POLO SHIRTS ARE FOR SALE

These shirts are a little different to our official work uniforms, but feature the same great design!

\$50 per shirt plus postage. Available in orange or purple.

Place your order with Alison or Traceylee in the Coen Office

UNISEX POLO SHIRTS: SIZES S – 4 XL | WOMEN'S AND CHILDREN'S SIZES AVAILABLE



Lama Lama Elders



Vera Liddy

by Elaine Liddy

My Name is Vera Liddy and I have two older brothers and two older sisters and I am the youngest. I have one daughter and four grandchildren plus adopted my sister's grandchildren.

All my life I've worked alongside my husband Keith on Yarraden Station as a domestic cleaner. I love the bush life and doing my favourite things like fishing and being around

my family. But on the other hand over the last couple of years I've been attending some on country meetings and trips both on land and sea which I found interesting. And I really enjoyed the company of seeing our young ones back on homeland it brings me joy and laughter.



Lindsay Bassani

POLICE CELEBRATION IN COEN, JULY 2013

On Thursday 3 July 2014, the Coen Community got together and celebrated the 150 – year anniversary of the founding of the Queensland Police Service. The day celebrated the important role that Indigenous people have played in the police service.

Lama Lama Rangers had an information stand at the celebrations and Lindsay Bassani talked about his experiences growing up with a police family.

"I've moved around a lot. I was asked to talk today to talk about my life story and my experiences growing up with Sergeant Vince. I am happy to be here because growing up with a police family is a big part of my life"



Getting ready for the Police Celebrations talk, Lindsey shares his story with Alison and Damon Prestipino.

Highlights from the

2014 kicked off with an Induction Workshop for all rangers which included performance appraisals, a review of policy and procedures and a group reflection on things were tracking to help set some goals for achieving more throughout the year ahead.



Ranger Base

The Ranger Base at Port Stewart is looking great, with the compound and fencing complete, and the new road behind the ranger base to help with dust.



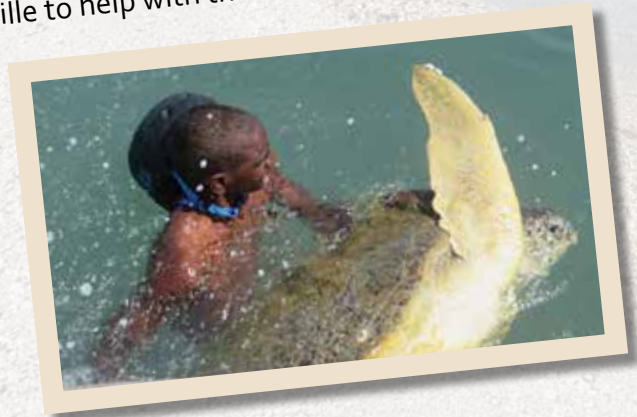
Weed Control

Lots of weed control took place! 2014 was our first year working towards the Weed Action Plan, we have been developing with Keith McDonald. Weed control mostly happens in the wet, when plants are flourishing. We are gearing up for the next round!



Turtle Survey

We completed our first ever survey with the Environmental Heritage Protection – Threatened species Unit to gather information about turtles in Princess Charlotte Bay. This was a great week on country and everyone got to be involved, including community members and Junior Rangers. We also hosted a volunteer from Venezuela who is studying at James Cook University in Townsville to help with the Turtle Rodeos.



Lama Lama Rangers



Sea Country Patrol

We did lots of patrolling throughout the year.

First up, based at Musgrave during the wet, to monitor pig hunting in the park and at Marina Plains. Easter Patrol based at Lilyvale. Land Based Patrols as part of our Baseline Assessment. Sea Country Patrol with both Great Barrier Reef Marine Parks Authority and Marine Parks. Even a joint patrol with Yuku-Baja-Muliki for sharing knowledge.



World Parks Congress

We attended the World Parks Congress in Sydney. This was a gathering of organisations, traditional owners, scientists and governments from around the world, who are all involved in managing protected areas.

It was good to hear stories from around the world!

We also presented with GBRMPA about our compliance activities.



Rapid Wetland Assessments

We worked with NAILSMA to monitor the wetlands and develop a tool for rapid wetland assessment which we shared with ranger groups in the region.

We welcomed rangers from our southern families to complete the fencing of Luba Swamp and boundary fencing! Casual rangers were also able to participate in dolphin surveys and turtle surveys. And Rindoparr families worked together to plan for the future of Marina Plains.

Marpa Island Baseline Assessment

In October 2013, a small team of rangers visited Marpa Islands with Keith McDonald to survey the plants and animals on the Island. This was the first of what we hope will be many trips, to gain a better understanding of the environmental significance of Marpa Islands.

The team consisted of – Paddy Bassani, Gavin Bassani, Elaine Liddy, Lisa Peter, Cheryl Prestipino – also Byron, Velda and Andre Grant from CAT – who luckily for him, was travelling through country and got to participate.

One of the highlights of the trip, was the discovery of more paintings. Keith advises that the two small islands are low in weeds. There were also turtle tracks on the small island. And the weather was perfect.

It was also great to have David and Judith and family from Chuula camp with us at Running Creek – while the surveys were underway.



Gavin, Lisa and Andre found some marine debris.



Grandad Paddy looking for turtle eggs.

In June and again in September 2014 we revisited Marpa Island with Keith McDonald. These trips concentrated on gathering more plant specimens and talking about weed management on the island.

As a result of our work, we have recorded seventy-four species to date with records making their way into the Queensland Government Wildnet database. No threatened or near threatened plants were detected. Four weed species were identified, none of which are on state or federal lists for the Islands. All these weeds are widespread in Queensland and all have been previously recorded as occurring on islands along the coast.

We are starting to get a really good picture of the natural environments on the islands.

Keith recommends another visit in the early dry season 2015, just after the wet as many of the common species had died of at the time of our previous visits. So, a trip in late April or May 2015 will yield better results but it will all depend on the wet season and access to the coast so the boat can be launched. Hopefully the winds will be down and no big waves!





Raine Island

Peter Liddy visited Raine Island and participated in surveys along with other rangers from Cape York.

Raine Island is one of the largest turtle rookeries in the world, with thousands of turtles nesting there each year.



Dolphin Surveys

We completed two more surveys for In Shore Dolphins in Princess Charlotte Bay and worked with the Junior Rangers on developing Sea Country murals as part of the partnership between JCU and YAC.



Photo left to right: Peter Liddy. Woibo Lakefield and Jarod Mclvor - Turtle Survey Week 2014. Peter Liddy and Chris Witana with AQUIS, Pig Necropsy.

Meet the Biodiversity Team

We welcomed new rangers to the Biodiversity team in 2014. This team is working strong together and doing a great job!

Peter Liddy joined the team. With many years' experience and lots of cultural knowledge, Peter provides great support to the crew based at Silver Plains. He is also joined by Jared Mclvor and Woibo Lakefield bringing some youthful energy to the team. Chris Witana remains the Team Leader of the Biodiversity Crew! Chris recently completed his Certificate 3 in Conservation and Land Management and helps organise weekly workplans and lead the team.

The team tackle the weed issue around the Silver Plains property. A key focus is on containing the spread of Gamba Grass. This weed has the potential to change the natural environments of the Cape if left untreated.

The Biodiversity Team are involved in work across all of the Lama Lama Estate as the Biodiversity project is focused on maintaining the natural values of all Lama Lama Country and the important role our land plays in maintaining the significant coastal corridor between Kulla and Rinyirru National Parks CYPAL.

Visiting Brisbane 2013

by Mikayla Down

In October 2013, Cheryl Prestipino, Gavin Bassani and myself, travelled to Brisbane to meet with representatives from the Queensland Museum, the Queensland Herbarium, the Threatened Species Unit in Queensland Government and the CSIRO's Eco-sciences Precinct. We were accompanied by Keith McDonald.



It was an eye opener and very refreshing. We had no idea of the extent of what went into collecting and storing data. All we knew was that we collected plants/or animals and the info got sent somewhere. However, when it got to a certain place it gets quarantined and checked for any fungi, rusts etc., it then gets stored in a huge freezer to kill any bugs that may have escaped initial detection. They then go on to get identified and later archived.

The Herbarium and Museum work together with the Eco-sciences Precinct to store data on the Queensland Government Wildnet Database. We were able to receive a demonstration on how to use the database in our work.

At the Herbarium we got to see the oldest plant sample they have on record. It had been collected in the 1870's by Dr Banks who had been on the same ship as Captain James Cook when he and his crew got stranded in Cooktown. It was a very unique experience to see something so old.

The Herbarium have been supporting Lama Lama with in-kind identification of much of the plant species we collect on Lama Lama Country.

At the Museum we got to look at Indigenous artefacts they have in storage. To see so many objects left on shelves was a bit overwhelming. I thought it was a shame that they weren't in the possession of the rightful people.



Rows and rows of pressed plant specimens, sorted for the future.



We also got to see a lot of the dead animal specimens. It was rather fascinating, although I did take a step back when they started pulling out the giant, dead, sea snakes!!

The trip was a success and we have since been in contact and made great connections with them to further our understanding of collecting and storing data.

A big Thank You to Keith McDonald for organising the trip and introducing us to his contacts in Brisbane. And also to the staff who welcomed us and shared information.



Marina Plains Project for 2014

In May 2014, the Rindoparr Fencing Project kicked off for the year.

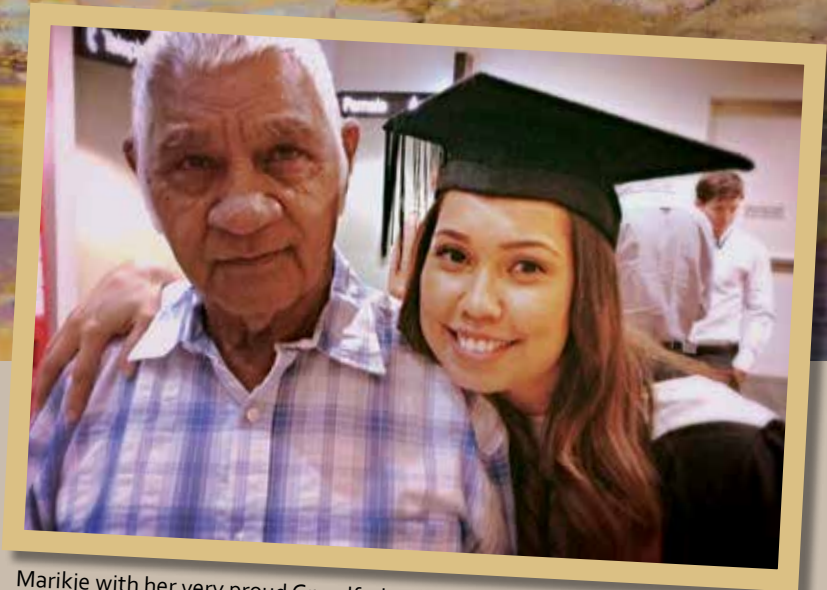
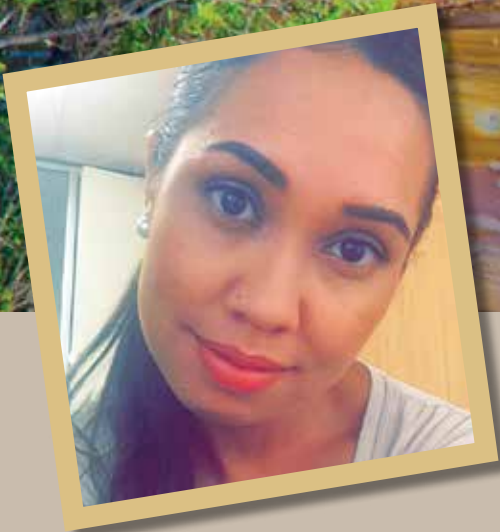
The project was funded by Caring for our Country and as it progressed also received support through Lama Lama National Parks CYPAL funds and Working for Country program.

The aim of the project was to fence off Luba Swamp wetlands and complete the property boundary fencing. This would protect the wetlands from the impacts of cattle as well as fence off an area suitable for agisting cattle.

We were also able to carry out some assessments on the Luba Swamp to look at fish species, water quality and riparian vegetation.



Young Lama Lama Leaders



Marijke with her very proud Grandfather, Paddy Bassani at her Graduation from University.

Marijke Bassani

I was raised in Cooktown and am fluent in my traditional Indigenous language, Guugu Yimithirr. My Indigenous roots lay within Hope Vale and Lama Lama Clan of Port Stewart.

As a consequence of isolation, at the age of 13 I left home, and attend boarding school at Lourdes Hill College, Brisbane to increase opportunities for my future. Here I graduated as Senior Boarding House Captain, and was the first Indigenous student to receive the role in 80 years. This role allowed me to participate in a school exchange program. In Japan for several months over the summer holidays.

In November 2013 I graduated from Griffith University with a Bachelor of Law and a Bachelor of Politics and Government. I am the first in my family to receive a tertiary qualification and I hope to inspire people with my drive and success.

Recently, I was selected as a spokesperson and representative of Griffith University Law School and Australia at large, to attend an international Academic Women's conference in Abu Dhabi, United Arab Emirates. This was an amazing experience that contributed to the further development of my leadership and communication skills.

I believe that we must be grateful for the obstacles and challenges we face in life as such adversity

only strengthens us for the journey that lies ahead. My journey thus far has not been an easy one, I have had to make many sacrifices along the way, and such perseverance has allowed me to reach my goal of becoming a Graduate Lawyer with Carter Newell, a Brisbane and Sydney based commercial law firm. The point I wish to make, and cannot stress enough, is that our people are capable of achieving anything we set our minds to. All it takes is hard work, determination, faith and a positive attitude.



It is my hope for the future to see many more of our Indigenous brothers and sisters graduating with tertiary degrees, as I believe that this will lead to great outcomes for our people.

Marijke was admitted to the scroll in October 2014.



Mikayla Down

In October 2013 a new position was opened for someone to become the Education and Engagement Officer for the Lama Lama Ranger Service.

The role also helps to develop resources to support the Ranger Team in the field, things like posters, weed decks and data-gathering sheets.

This position was offered to Mikayla, it was clear she had a knack for it, having already commenced a series of weed management posters working alongside Keith McDonald. She also had put her hand up to take on a little more responsibility at work.

Along with the usual field ranger responsibilities, her job involves

- Assisting in Junior Ranger Programs.
- Leading presentations when required.
- Developing signs and posters, brochures and flyers.
- Developing resources to support the rangers in their work.

Mikayla joined the Lama Lama Rangers after undertaking a Certificate 2 Skilling for Queenslanders traineeship based at Silver Plains in 2012. She graduated with a Certificate 2 in Conservation and Land Management and not long after joined the team based at Port Stewart. Before returning to Port Stewart from high school studies, Mikayla was in Sydney studying with NAISDA Dance College, an experience she thoroughly enjoyed. She is now back on country and contributing to the growth of YAC for the future. She is also undertaking her Certificate 3 in Conservation and Land Management.



Troyson Bassani

A PASSION FOR SPORT, LIFE & SCHOOL

by Petrina Bassani

There are many things that Troyson could have done in Yarrabah but he made the decision to move beyond its hill to see the bigger picture and equip himself with a rock solid education and a passion for sport, life and school.

Troyson received the High Expectation Program Scholarship with Cape York Institute and graduated Year 12 at Marist College Ashgrove in Brisbane back in 2008. He later went onto Tertiary Studies with Griffith University, Nathan Campus, for 2 years in 2009 to 2010 before returning to North Queensland. After 7 long years of hard commitment to study and pursuit of his dream, he is now nearing completion of a Dual Bachelor of Arts degree – majoring in Political Science and a Business Administration degree with James Cook University, a first young man in our communities to graduate with a dual degree at the age of 22.

During his time off from school and university, Troyson was given many opportunities to spend time back on his father's country and has worked casually with the Lama Lama Rangers doing land management projects.

Troyson is now employed as the Sales Marketing Coordinator with Tjapukai and is involved with creating new products with the Cultural Park. He travelled on his first overseas Marketing Tour in March 2014 to the USA – a perfect stepping stone for Troyson who plans a future back to where his heart will lead him, making a difference to his own community.

“Education was always very important for us” says Les & Petrina Bassani who are very proud parents of Troyson. “We had to give him all the support he needed going from Yarrabah to Brisbane and he got to see the real world and many successes”

Junior Rangers



Lama Lama Junior Rangers Bernard and Baizam using their field ID guides to paint their own canvas. Photo: Helen Penrose

Lama Lama Community Mural 1 and 2. Dimensions: 3 x 1 m. Photo: Dr Helen Penrose.

Lama Lama Junior Ranger Dolphin and Dugong Art Workshop

By Dr Helen Penrose – James Cook University

During the July school holidays the Lama Lama Junior Rangers participated in a weekend-long dolphin and dugong identification art workshop at the Port Stewart Community Building. The marine education workshop represents just one of many activities that the Lama Lama Traditional Owners and JCU researchers (Dr Helen Penrose and Dr Isabel Beasley) had planned together as part of their collaborative research project 'Linking Indigenous and Scientific Knowledge of inshore dolphins and dugongs to evaluate their conservation status within Lama Lama Sea Country'. This research engages the Yintjingga Aboriginal Corporation (representing the Lama Lama Traditional Owners) as an important and respected source of information of these species within the Princess Charlotte Bay region of Cape York. This project is funded by the Federal Government's National Environmental Research Program.

Our focal species include the Australian snubfin dolphin, Indo-Pacific humpback dolphin, Indo-Pacific bottlenose dolphin, and the dugong. At the July 2014 art workshop, Dr Helen Penrose presented information on the key identifying features (such as dorsal fin shape and size, body colour etc.) to approximately 30 Lama Lama Junior Rangers, ranging in age from 4 to 16.

'An art workshop for the Junior Rangers was a fun and hands-on learning activity that aimed to familiarize the children with the features of these marine mammal, particularly the dolphins, which together JCU and the Lama Lama Rangers are looking for in their sea country', said Dr Helen Penrose. 'The workshop resulted in two beautiful murals that feature these species, as well as other sea life of the children's choice. The final product is very much the work of the Junior Rangers with some final touches by adult family members and Lama Lama senior rangers, including Mikayla Down'.

Dr Helen would like to thank the Lama Lama traditional owners, particularly Alison Liddy, Elaine Liddy and Traceylee Forester for helping to make the art workshop such a success.



Learning how to identify the different dolphins.



Lama Lama Junior Rangers (Left to Right): Benedict, Conell, Sandra, Kiara, Fabian, Nicholas, Velda, and Liam with their dolphin and dugong field identification guides. Photo: Jill Penrose



Lama Lama Junior Rangers Walter, Keiran, Mark, Phoenix, Baizam and Bernard painting the background of the art mural. Photo: Jill Penrose



Lama Lama Junior Rangers Alkere, Mark and Benedict painting the dolphin and dugong mural at the Port Stewart community building. Photo: Jill Penrose



The JCU and Lama Lama art workshop participants, including Junior Ranger Leader Alison Liddy (top row, third from left).



JCU Project leader, Dr Helen Penrose of James Cook University with Gordon and Conell.

The Lama Lama Junior Ranger Program



The Lama Lama Junior Ranger program was a great success in 2014!

This year we were able to purchase camping equipment for when we are doing activities on country, which a lot of our kids look forward to.

We were able to secure enough funding to run the following activities throughout the year, mainly during the school holidays, and some on weekends.



- May 2014 - Working on Country – Cultural Heritage Day – held at Port Stewart gave kids an opportunity to talk about bush tucker, hear some of the history of Port Stewart and visit some of our key wetlands for a demonstration on weeds and using wildlife cameras.
- June 2014 – TUMRA also co-ordinated a Yuku-Baja-Muliku and Lama Lama Junior Ranger exchange camp in Cooktown.
- June 2014 – With James Cook University, as part of the In-shore Dolphin project we painted two murals and learnt how to identify different species of Dolphins.
- September 2014 with Environmental Heritage Protection, Queensland Government, we were able to have the rangers take part in Turtle surveys based at Running Creek.
- Throughout the year, our high school students aged 16 plus were able to participate in some paid work experience.
- And in December 2014 our young leaders aged 16 – 24 participated in a Pathways Trip to Cairns and Townsville to learn more about the opportunities working and studying in Natural Resource Management.
- A small team of Junior Rangers accompanied them to learn more about the Great Barrier Reef.

Training

Congratulations to Karen Liddy, Steven Doctor, Elaine Liddy and Chris Witana for completing their Certificate 3 in Conservation and Land Management certificates with Northern Skills Alliance.

The team at Northern Skills have been very impressed with our Lama Lama Ranger Team. Our Rangers have shown heaps of enthusiasm and great hands on knowledge of their work.

The next training sessions kick off early 2015. Casual Rangers, there are training opportunities for you also, please talk with Gavin Bassani to register your interests.

Culture



Above: left to right: Elaine, Alison and Karen, with the crew from Melbourne Museum with the newly installed photo display.



Above: Gavin and Markus putting up the Men's Business Sign.
Below: Armin finishes the photo display signage.

Cultural Centre at Port Stewart

The Information Centre at the Community building is finished with all 36 black and white Donald Thompson photos, plus some of our local artefacts on display for family and visitors to see. We also have some new window art! With the renovations completed in 2013, the cultural room offers a comfortable place to learn about our culture and history.

A visit from Nolene Cole, Di Hafner, Lindy Allen and Dianna coincided with the lights been switched on behind our photo displays! We met at the Coen Guest house and talked about the photos from the Victoria Museum, plus rock art photos taken by Elaine Liddy when visiting Marpa Island. There might be some funds to help with a visit to view the Tindal Collection in 2015. And some extra help to set up the Men's Business room.

In 2015, we will add to the Information Centre, a landscape photo display of Lama Lama Country, and interactive whiteboard to assist with presentations and meetings and Wifi.

We would like to thank Narelle Jones and her husband Armin and brother in law Markus for their help installing the final signage and window frostings. We hope Markus, who was visiting from Germany, enjoyed his trip to the Cape.



Sea Country



TUMRA Celebration Day

By Traceylee Forester

On the 25th September 2013, the TUMRA celebration day was held at Port Stewart. The day was a great achievement for Lama Lama People and especially the TUMRA Steering Committee. We celebrated with 120 guests from all levels of government, other ranger groups, neighbouring businesses and the wider Lama Lama community.



TUMRA stands for Traditional Use of Marine Resources Agreement. The TUMRA is a collaborative partnership between Lama Lama People, Great Barrier Reef Marine Park Authority and the Department of National Parks, Recreation, Sporting and Racing. The TUMRA Steering Committee and interested Lama Lama People have been working with our partners for many years to have our TUMRA accredited.

Our program for the celebration day showcased the talents of our Executive Board Members, TUMRA Coordinator, Lama Lama Rangers and Junior Rangers. We were able to share with our guests, the history of Lama Lama Country, the steps leading up the accreditation of the TUMRA, ranger experience on our land & sea country, Junior Rangers spoke about their program, SQW traineeship on country and the importance of continuing to look after our land and sea country into the future.



We displayed material from our Biodiversity Project – highlighting what the project is working towards, some of the natural features of Lama Lama Country and our weed management activities.

We highlighted the fact that we are the current generation that is looking after our land and sea country and this has been continuing for many decades. There is still a lot of work involved in the next phase of TUMRA and we will continue to work hard to protect our country and leave a legacy for our children.

ATTENTION LAMA LAMA HUNTERS! Our TUMRA is now in place. It's time to apply for registration as a Lama Lama hunter. Your application goes to the TUMRA Steering Committee for approval. This registration acknowledges you as a recognised hunter, but it does not give you permission to go hunting. Each time you wish to go hunting, you will be required to apply for a permit. The TUMRA Steering Committee will issue you this permit.

To apply for registration, please contact Traceylee Forester in the Coen Office on 07 4060 1048 or tumra@lamalama.org.au.



Governance

Planning for Rindoparr

On the 20 March 2014, a group of Lama Lama Family got together in the Cairns Office to talk about Marina Plains.

The meeting was the first in a series planned for 2014, to talk with family about what they would like to see happen on Rindoparr – Marina Plains Nature Refuge.

Meetings were held in March in Cairns, May at Musgrave and Marina Plains and September back in Cairns office. Heaps of great ideas have been shared and we are currently preparing a report to send out to family for feedback. More meetings will be held in 2015 to finish the plan.

The Marina Plains Planning Project is funded from biodiversity program. The project aims to bring people together to talk about what is important at Marina Plains, how we want to manage things / make decisions and ideas for the future and things to aim towards.



Above: QPWS joined the Musgrave meetings to talk with us about the environmental significance of the Marina Plains area.

Endangered Little Tern



(*Sternula albifrons*)

COMMON NAME: Little Tern

SCIENTIFIC NAME: *Sternula albifrons*

DESCRIPTION:

The Little Tern is the smallest of the terns to be found in Australia. From tip of beak to tip of tail it is 20-28 cm long and its wingspan is 45-55 cm wide. It has a long tail which is forked at the end and its bill and legs are yellow. Its bill usually has a black tip. The female and male both look the same so it's very hard to tell them apart.



The Little Tern is found everywhere in the world except Antarctica and its found all over Australia except south west to southern parts of Western Australia. They are usually found on coastal areas and beaches but are rarely found offshore, they never venture out to deeper waters. In winter they move to breed along the north coast of Australia. They usually feed in small groups.

BREEDING HABITS:

The Little Tern breeds from May to July in the Gulf of Carpentaria and mostly in September to January along the east coast of Australia. It lays its eggs in a shallow depression scraped into the sand. It usually lays 1-3 eggs and it takes 17-25 days for the eggs to hatch. After hatching the babies are on their feet straight away and learn to fend for themselves. It only takes 17-19 days for babies to become adults.

THREATS:

The Little Tern has to watch out for a lot of threats from humans and from nature. Nests are sometimes flooded by freshwater run-off following very heavy rain events. Strong winds can blow sand on eggs and chicks. Other animals such as silver gulls, gull-billed terns and torresian crows eat the eggs and chicks. Recreational activities by humans on coastal areas result in eggs and chicks being crushed reducing the reproduction cycle of the Little Tern. Coastal development can disturb the suitable nesting habitats (areas). Little Terns are potentially susceptible to pesticides and contamination of the water by oil spills and heavy metals will make it hard for the Little Tern to feed therefore making it hard for them to survive.

WHY IS IT ENDANGERED?

The Little Tern was placed on the Endangered List because of its poor breeding success. Humans and natural threats were factors in it being added to that list. It had a rapid decline in population in recent years therefore now it is being watched and certain government bodies are trying to get its breeding success rate back up to a suitable capacity for the species to survive.



The Little Tern has been chosen by the Lama Lama Junior Rangers as their logo.

